

# Senior Tennis Players Club, Inc.

5290 Villa Way Suite 312 Edina 55436 Phone (612) 922-9128 A non-profit corporation

DECEMBER 1986

## TENNIS FOR LIFE

By overwhelming approval of the Executive Committee, the Club is offering a non-transferrable lifetime membership to its members for \$100 (\$90 to those who have already paid their 1987 dues). Lifetime members will receive a gold membership card, will always be given priority on all things and will be entitled to many other privileges because of their unique position in the Club.

Lifetime memberships will be restricted to the first 100 applications.

Checks should be made out to the Senior Tennis Players Club, Inc. and mailed to Elsa Hutchinson, Treasurer, 6927 Langford Drive, Edina, MN 55436.

The super champagne reception will be on Thursday, January 22, 1987 at The Minneapolis Club from 3 to 5 p.m. Celebrities will be in two segments--3-4 o'clock and 4-5 o'clock.

The Minneapolis Club is one of the most prestigious clubs in the nation and certainly the most exclusive in Minnesota--worth seeing--especially the library in which the reception will be held. One of the oldest clubs, it has hosted most of the Presidents to date, including President Teddy Roosevelt, and is still housed in the original 19th century building of old-world charm, with hand-operated, cast iron open elevators, and yet with many modern remodeled rooms and dining areas.

Tickets are \$29 single, \$50 per couple (either husband and wife or two members of the same family). Lifetime members will be admitted free and will be introduced.

Make checks payable to the Senior Tennis Patrons, Inc. (a nonprofit organization) and send to:

Gen and John Bolger, Chairpersons  
6638 Morgan Avenue South  
Minneapolis, MN 55423

Tickets may be assigned to others if unable to be used by yourself, but only 100 will be available. Funds raised will be used to partially underwrite the Senior Tennis Players Club beginners' program.

We'll see you there!

## JOIN THE TENNIS CELEBRITY RECEPTION OF THE CENTURY

You, your family and friends are invited to attend the celebrity reception to which most of the tennis greats are invited. This includes our own TV and radio stars Bob DeHaven, Dave Moore, Boone and Erickson, Howard Viken, Steve Cannon, Pat Miles, Barry ZeVan; Ralph Thornton of the Minneapolis Star & Tribune; corporate presidents of General Mills, Pillsbury and Honeywell; also Governor Perpich, Senators Boschwitz and Durenberger, Congressman Bill Frenzel, Skip Humphrey and Mark Dayton; theater presidents and stars of the Guthrie and Chanhassen; from the educational community the President of the University of Minnesota, Hamline and Saint Thomas, and many other groups comprising our society.

SAM MERSKY OFFERS

FOR SALE

DLXE 2 BEDROOM CONDOS

PLYMOUTH OR EAGAN

2 BR, 2 BA, ALL GE APPLIANCES: FULLY CARPETED.  
Security bldg., 3 yr. old; HTD GAR; tennis,  
sauna, pool; ex. room and party room. Snow  
shoveling, lawn care and maintenance by the  
condo assn. Lovely wooded area, pleasant  
neighbors. Zero down, assume my 8 3/4% mtg.  
and I will pay \$2,500 cash per condo to a  
qualified buyer. Mtg. bal. approx 59K to 60K.  
Fantastic deal for investor OR owner occupant!

Sam Mersky, 377-7365

TRAVEL BONANZA

Fly anywhere in the 48 states for \$56:  
NY Seattle Fla Tx Az Cal, etc. Must be  
62 & buy 8 1-way tickets (total \$448).  
Call Louise or Wm Storie, 428-2052.

EXPERIENCED TAX SERVICE

Twenty years of experience in the tax  
business. Syl Hansen, 529-8903.

LOST

A hot pink warmup suit jacket was left at  
Wolfe Park this summer. Call Dee Kelehan,  
822-8275.

REALTOR

Beverlie Lyles, G.R.K., Edina Realty  
Two Million Dollar Club, 3930 West 49 $\frac{1}{2}$   
Street, Edina, MN 55424. Business -  
920-1960; residence - 925-5369.

FOR RENT

1 and 2-bedroom condos on the beach  
Mazatlan, Mexico. Call Jim Feilzer,  
881-9485.

notice

"THE NEW SPORTS AND HEALTH CLUB" is happy  
to announce a special program for seniors:

- Special rates
- 1/2 off on current enrollment fee
- 20% off on monthly dues
- Special "Fitness Over 60" program

Now in Progress

- Exercise classes designed for  
senior ladies by a senior lady
- Full use of all facilities at  
all the clubs

COME! GET IN SHAPE FOR SPRING!

For more information, call Grayce, 938-9097  
or  
The New Sports and Health Club, 831-2660,  
and ask for Grayce

## TENNIS CLUB MEMBER OF THE MONTH

## DUES NEWS

One of the most productive and hardest-working officers of the Club is that energetic and supportive top tennis player, Chuck Supplee, who certainly deserves the thanks and appreciation of all of us who have admired his dedication and hard work to help develop senior tennis. Well done, Chuck!

I hope you will continue to give us the same great effort and support that has meant so much to our continued growth and progress.

Jack Dow,  
President



### DON'T BREAK THE CHAIN!

Continue your membership for another great year of tennis and all the other fun by paying your 1987 dues now. Dues are \$10 per person (\$20 for a couple) per calendar year (January 1-December 31). Do it now before the deadline, January 31. Dues are going up!

Fill in the statement you were mailed with the last newsletter. Make check payable to Senior Tennis Players Club, Inc. and mail to: Elsa Hutchinson, Treasurer, 6927 Langford Drive, Edina, MN 55436.

### THANKS A BUNCH!

To the volunteers that helped spread the word about senior tennis in our booth at the Senior Options Expo in the Minneapolis Auditorium, thanks again to Grayce Aberle, Erna Blatt, Allan Campbell, Ruth Copeland, Pat and Don Dreblow, Betty and Ralph Fuller, Avelyn Hooker, Jim Horan, Trudy Hughes, Sis Johnson, Mary Kaminski, Beth Kelley, Hetty Kuik, Louise Nomura, Muriel and Milt Olson, Burt Patch, Nancy Rampy, Ruth and Bob Reid, Chuck Supplee, Floreda Tate, Marilyn Thorne, Phyllis Timberg, Bob Torbert and Dorothy Trow.

Remember, most of the club work is done by unpaid volunteers. Your club is operated by volunteers and they make the club go. Participate by helping to make calls, helping at the courts and parties, taking calls, keeping records, gathering information, making surveys, making signs--or any area of talent you may have. Call William Storie, 428-2052.

### TENNIS PARTY A GREAT SUCCESS

We're sorry we could not accommodate the many, many people who wanted to play tennis at our party November 15. We had eight courts for four hours so we could schedule only 64 players. Besides the 64 players, many people came just to socialize.

Many thanks go to Beverlie Lyles for the feast she and her committee (Trudy Hughes, Margaret Iten, Margaret Jenkinson, Dee Kelehan, Beth Kelley, Leona and Elvin Kolstad, Polly and Sam Mersky, Elsie Noonan, Burt Patch and Ethel Trebil) prepared for us to enjoy between sessions of play. Thanks also to Ginny Owens for the arrangements made with Midwest.

Good tennis and a wonderful time was had by all.

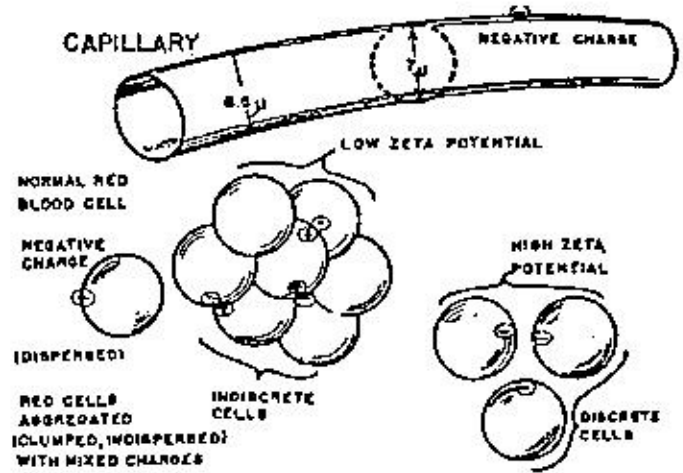
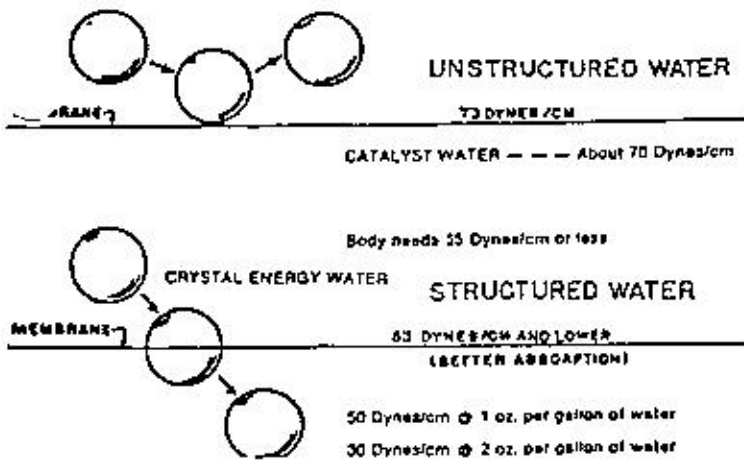
Mandy Johnson



# CRYSTAL ENERGY WATER

**LOW RESISTANCE - Better Absorption**

**HIGH ZETA POTENTIAL - No Aggregation**



**INCREASES: ENERGY, STAMINA, MEMORY, CLARITY OF THOUGHT, REFLEXES, PERFORMANCE, AND FREES UP YOUR TIME TO MAKE MORE MONEY!**

Dr. Patrick and Gael Flanagan discovered the "secrets" of the healing waters of Lourdes, and of the waters of the Hunzas in Tibet who live longest and are the healthiest people on earth.

**HUNZA WATER**- The Hunzas- have children past the age of 100 yrs., have no known diseases, and remain active in their lifetimes which frequently span over 130 yrs. They give credit to THE WATER for these startling statistics.

Dr. Flanagan named as one of America's top 10 scientists at age 17 has devoted over 23 years to developing "CRYSTAL ENERGY WATER". The result is a patented process- a colloidal suspension of 72 highly ionized organic minerals in pure water.

**CARROT JUICE**- The above properties plus more are also superbly displayed in carrot juice- the greatest natural healer from the plant kingdom. Average water is 73 dynes (unit of surface tension measurement); Hunza water is 68 dynes; fresh carrot juice is 38 dynes; orange is 45, but both disintegrate to 73 dynes within 24 hrs; human urine is 55 dynes! CRYSTAL ENERGY WATER at 1 oz. per gallon of pure water is 48 dynes, and at 2 oz. per gallon is 30 dynes and is stable!

**MORE ENERGY**- CRYSTAL ENERGY WATER in your body: 1. INCREASES OXYGEN AVAILABILITY by reducing red blood cell clumping and increasing hemoglobin, 2. INCREASES TO 4X YOUR UPTAKE OF NUTRIENTS, 3. INCREASES ELIMINATION of waste products, 4. INCREASES YOUR BODY'S ABILITY TO DO ANY OF ITS FUNCTIONS, 5. DECREASES THE WORK YOUR BODY NEEDS TO DO to convert food and oxygen to energy; plus, this means YOU HAVE THE ENERGY AND THE STAMINA YOU WANT TO ACCOMPLISH AND ENJOY WHAT YOU WISH. Studies with race horses have shown PERFORMANCE IMPROVEMENT of 8 to 11 lengths in 6 furlongs in just eight weeks.

**FOR MORE INFORMATION**

Contact: Al Holter



*Uninited*

A + J. HOLTER ENTERPRISES

Al Holter  
Direct Manager

4386 Xenia Ave. North  
Crystal, MN 55422  
Tel. (612) 537-1843

1986-87

Executive Committee

President  
Jack Dow

Vice Presidents

Clara Carlson  
Ruth Copeland  
John Crow  
Percy Hughes  
Mandy Johnson  
Mary Kaminski  
Sue Larson  
Virginia Morgan  
Charlotte Ryden  
Bill Storie  
Chuck Supplee  
Ruth VanHilst  
Marian Versen

Treasurer  
Elsa Hutchinson

Secretary  
Jean Kelly

Directors

Kenneth Anderson  
Genevieve Bolger  
Ned Bunday  
Harold Griffiths  
Fred Hermann  
Edwin Holzacker  
James Horan  
Phyllis Hultgren  
Robert R. Larson  
Chuck Mercer  
Al Mohr  
Jack Thommen  
Ethel Trebil  
Dennis VanDerMeer  
Jean Wallace

December 1986

Monthly Newsletter for  
Senior Tennis Players Club, Inc.

Copy deadline for  
next issue is

December 20, 1986

Editor  
Mary J. Kaminski  
3300 East Gate Road  
Saint Anthony, MN 55418  
781-3271

Associate Editor  
Mary C. Peterson

Senior Tennis Players Club, Inc.  
5290 Villa Way, Suite 318  
Edina, MN 55436

Nonprofit  
Organization  
U.S. Postage  
PAID  
Minneapolis, MN  
Permit No. 3270

